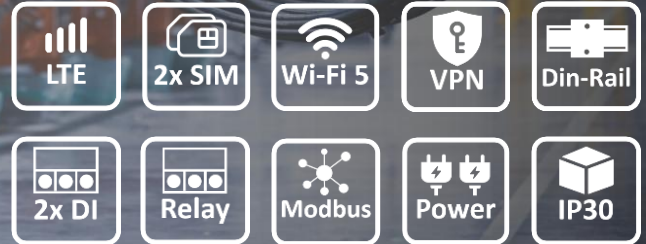


Industrial 4G LTE Router

IAD200




Industrial-grade Design


Stability & Reliability


Security & Protection


Multiple Interfaces


Flexible Wireless


Easy & Convenience

- The IP30 fanless metal casing design supports harsh operating temperatures from -40°C to 70°C , and provides a backup mechanism for dual DC power inputs.
- The dual-SIM design supports mobile transmission backup and ensures the stability and reliability of the network through the failover management mechanism of multiple Internet interfaces. The communication between the remote device and the monitoring center is uninterrupted, maximizing uptime.
- Supports TACACS+ to provide independent authentication, authorization, and accounting services, and supports IPSec, WireGuard to establish secure network connection communications to protect your data access.
- Can be connected to Ethernet, RS485, RS232, DI, and Relay interfaces, and uses the common communication protocol Modbus TCP to communicate with peripheral devices in various field applications.
- Supports IEEE 802.11a/b/g/n/ac, can configure Wi-Fi as a WAN or access point, and provides Wi-Fi security WPA2-PSK (AES).
- Provides mass configuration, device management, and firmware upgrades through TFTP/HTTP to quickly maintain and manage remote application devices.

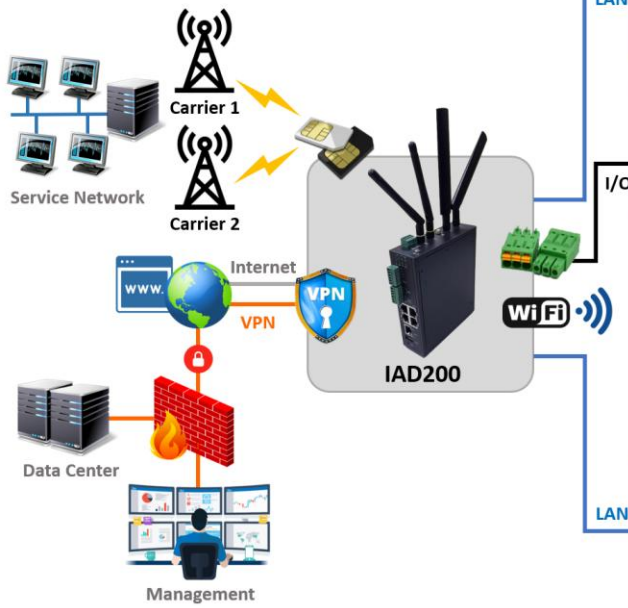
Introduction

IAD200 is a highly-reliable and secure gateway combines 802.11ac and 4G LTE technologies to provide flexible wireless network connectivity. It supports with five Gigabit Ethernet ports (4 x LAN, 1 x WAN) and RS232/ RS485 interface for Modbus application. DIN-Rail mounting, wide operating temperature range from -40°C to 70°C , and IP30 housing, the IAD200 is a convenient yet reliable solution for any industrial wireless application.

IAD200 allows users to implement encrypted VPN tunnels and other basic Wi-Fi routing capabilities. With IEEE 802.11ac dual band radio it can operate either 5GHz or 2.4GHz bands. IAD200 adapts MIMO technology with smart antenna transmission and reception for 2T2R. It also supports AP/ Client modes to diverse for most of wireless application.

The LTE CAT4 up to 150Mbps for downlink and 50Mbps for uplink data transfer. It also supports multi-band connectivity including LTE-FDD/ LTE-TDD/ HSPA+/ UMTS/ EDGE/ GPRS/ GSM for a wide range of applications and machine to machine communication.





Model

IAD200-45M	4G LTE/ Wi-Fi 5/ Modbus
IAD200-40M	4G LTE/ Modbus

Physical Interface

LAN port	4 x 10/100/1000BASE-T RJ45, auto-negotiation, auto MDI/ MDI-X
WAN port	1 x 10/100/1000BASE-T RJ45, auto-negotiation, auto MDI/ MDI-X
Serial port	1 x RS232 1 x RS485
I/O port	2 x DI (isolated) 1 x Relay
Reset Button	for restoration to factory default

WLAN Interface

Standard	IEEE 802.11a/b/g/n/ac
Module Brand	Realtek
Module Model	RTL8822CE
NCC ID	CCAI18LP2010T7
Operating Frequency	2.4GHz: 2400 ~ 2483.5 MHz 5GHz: 5150 ~ 5725 MHz
Mode	AP, Client mode
Encryption	WPA2-PSK (AES)
Antenna connectors	2 x PR-SMA/ 50ohm

Cellular Interface

Frequency (SA)	LTE CAT4 (Uplink up to 50Mbps, Downlink up to 150Mbps) LTE-FDD: B1/ B2/ B3/ B4/ B5/ B7/ B8/ B28/ B66 WCDMA: B1/ B2/ B5/ B8 GSM/ GPRS/ EDGE: 850/ 900/ 1800/ 1900MHz GNSS support (Optional)
SIM slot	2 x nano SIM
Antenna connectors	2 x SMA/ Cellular interface/ 50ohm 1 x SMA/ GNSS interface/ 50ohm

Network Functions

Protocol	IPv4, DDNS, STP
Packet Statistics	RMON counter
WAN connection	DHCP Client, Static IP, PPPoE
Auto Provision	CWMP/ TR-069
Dynamic routing	RIPv1/v2 Modbus TCP Server
Industrial & IoT	Transparent (RTU over TCP) MQTT
Diagnostic Tool	Ethernet Statistics, Ping, TcpDump





Management Functions

Switch management interface	Console/ Telnet CLI Web management SSHv2 secure access
Firmware upgrade	TFTP/ HTTP
RTC	SNTP and embedded RTC
Access Log	System Access Log display and output file SMS and SNMP Trap alarm reporting
Configuration	CWMP/ TR-069 Provision User Profiles backup and restore
Monitoring	RMON counter

Security Features

VPN	IPSec, WireGuard
NAT	Virtual Servers/ Port Forward Demilitarized zone (DMZ) NAT Pass-through
Firewall	MAC, IP, URL for Black & White list filter Discard WAN Access/ Ping
Transmission	HTTPS/ TLS/ 1.2/ 1.3
Access security	TACACS+ for AAA
Access levels	Administrator, Operator and Monitor
Anti-camouflage attack	Lock IP and delay login
Disable Interface	Telnet, SSH, HTTP and HTTPS

Power

Input	3.5mm 4-pin Terminal block with external DC dual input
Range	DC 9 ~ 48V
Consumption	Less than 10W

Environmental Limits

Operation	-40°C ~ 70°C (-40 to 158°F)
Storage	-40°C ~ 85°C (-40 to 185°F)
Relative humidity	5 ~ 95% (non-condensing)

Regulatory

NCC	CCAF254G023AT1 CCAF254G0230T2
EMC	CNS 15936 (equivalent to CISPR 32)
Cellular	EN 301 908-1
WLAN	EN 300 328 (2.4GHz ISM) EN 301 893 (5GHz RLAN)
Safety	CNS 15598-1

Mechanical

LED indicator	PWR, SYS, Wireless, Wi-Fi, SIM, WAN/ LAN - SPD/ LNK
Dimensions	W 40mm x D 123.5mm x H 141mm
Weight	560g
Casing	IP30 iron case, DIN-Rail design

