

OLT 9700/4P

OLT 9700/8P

OLT 9700/16P

4/ 8/ 16 PON port GPON OLT



- Open to any brand of ONT
- Support RIP v1/v2, OSPF v2, IPv6
- Power backup
- Easy to manage and friendly interface
- Meet ITU-T G984/ G.988 standards
- Friendly EMS/ Web/ Telnet/ CLI management
- CLI command style likes mainstream manufacturers
- 1U height
- Adopt mainstream chip scheme

Thanks to the increasing popularity of Video-on-Demand (VoD), VoIP and increased IPTV deployment worldwide, the eagerness for bandwidth drives the continuous growth in user bandwidth demands. The goal of fiber reaching all the way to customer premises to perform FTTH, FTTB, FTTP, and FTTC solution is Passive Optical Network technology.

TAINET's OLT 9700 Series product provides cost-effective solution with 4/ 8/ 16 PON links, 1U height 19-inch rack mount design. The features of the OLT are small, convenient, flexible, easy to deploy, high performance. It is appropriate to be deployed in compact room environment. The OLTs can be used for Triple-Play, VPN, IP Camera, Enterprise LAN, and ICT applications.

TAINET OLT 9700 series product with the simple, scalable, and capable characteristics can deliver bundled voice, data, and video services to an end-user over a single network, and appear to be the best candidate and choice for your next generation access network.



Model

- OLT 9700/4P, 4*GPON, 4*GE, 2*SFP/SFP+
- OLT 9700/8P, 8*GPON, 8*GE, 6*SFP, 2*SFP+
- OLT 9700/16P, 16*GPON, 8*GE, 4*SFP/SFP+

Management Mode

- SNMP、Telnet、CLI、WEB、SSH v1/v2

Management Function

- Fan Group Control
- Port Status monitoring and configuration management
- Online ONT configuration and management
- User management
- Alarm management

Layer 2 Switch

- 16K Mac address
- Support 4096 VLANs
- Support port VLAN and protocol VLAN
- Support VLAN tag/ Un-tag, VLAN transparent transmission
- Support VLAN translation and QinQ
- Support storm control based on port
- Support port isolation
- Support port rate limitation
- Support 802.1D and 802.1W
- Support static LACP, Dynamic LACP
- QoS based on port, VID, TOS, and MAC address
- Access control list
- IEEE802.x flow control
- Port stability statistic and monitoring

Layer 3 Route

- ARP proxy, 1024 hardware host routes, 512 hardware subnet routes
- Support 802.1X, Radius, TACACS+
- Support IP source guard
- Support static route
- Dynamic route RIP v1/ v2, RIPng
- Support OSPF v2/ v3

Multicast

- IGMP snooping
- 256 IP Multicast Groups

DHCP

- DHCP server, DHCP relay, DHCP snooping, DHCP option82

LED Indicators

- PWR, SYS, PON, SFP/ SFP+, Ethernet

GPON Function

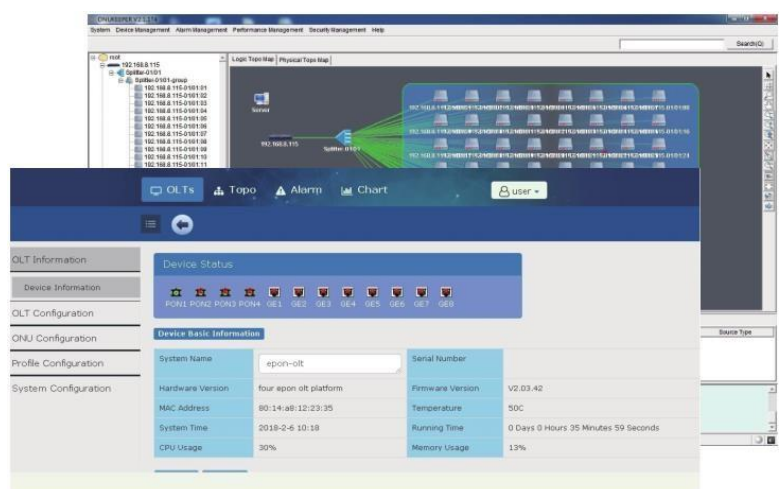
- T-CONT DBA
- GEM port traffic
- In compliant with ITUT984.x standard
- Up to 20KM transmission Distance
- Support data encryption, multi-cast, port VLAN, separation, RSTP
- Support ONT auto-discovery/ link detection/ remote upgrade of software
- Support VLAN division and user separation to avoid broadcast storm
- Support power-off alarm function, easy for link problem detection
- Support broadcasting storm resistance function
- Support port isolation between different ports
- Support ACL and SNMP to configure data packet filter flexibly
- Specialized design for system breakdown prevention to maintain stable system
- Support RSTP, IGMP Proxy

Support IPv6

- Support NDP
- Support IPv6 Ping, IPv6 Telnet, IPv6 routing
- Support ACL based on source IPv6 address, destination IPv6 address, L4 port, protocol type
- Support MLD v1/ v2 snooping (Multicast Listener Discovery snooping)

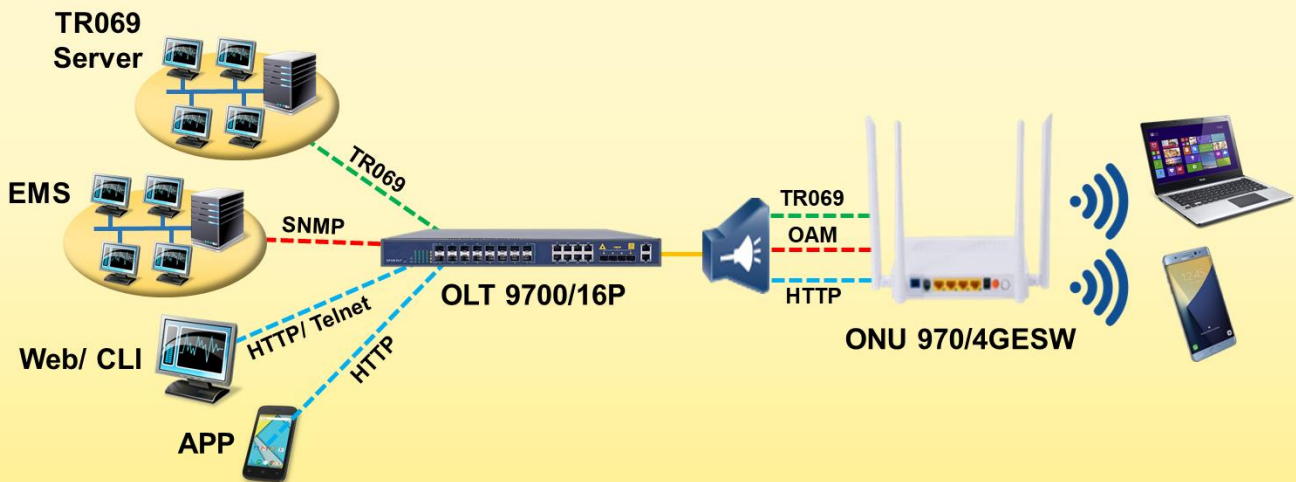
EMS

- Support C/S & B/S architecture
- Support auto topology or modify manually
- Add Trap Server to detect ONT automatically
- EMS can add and configure ONT automatically
- Add ONT position information



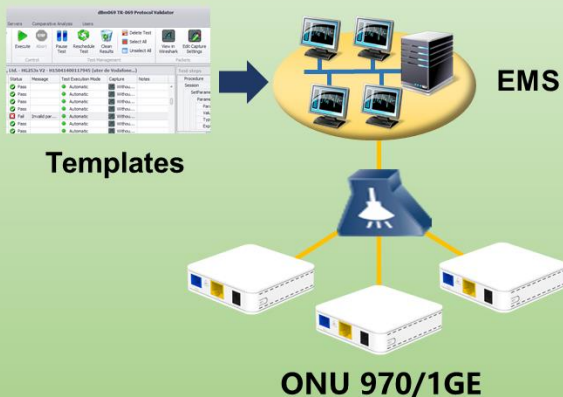
Software Function		
License Management	ONT limit	Limit number of ONT registration, 64-1024, step 64. When the number of ONT reach the max number permit, add new ONT to system will be refused.
	Time limit	Limit system used time, 31days. Equipment trial license, after 31days of running time, all ONTs will be set offline.
PON mac table		A MAC table of PON, including MAC address, VLAN ID, PON ID, ONT ID, GEM port ID for easier services checking, troubleshooting.
ONU management	Profile	Including ONT, DBA, TRAFFIC, LINE, SERVICE, ALARM, PRIVATE profiles. All ONT features can be configured by profiles.
	Auto learn	ONT automatically discovery, register, online.
	Auto configure	All features can be automatically configured by profiles when ONT auto online - plug & play.
	Auto upgrade	The ONT firmware can be auto upgraded. Download ONT firmware to OLT from Web/ TFTP/ FTP.
	Remote config	The powerful private OMCI protocol provides remote HGU configuration including WAN, Wi-Fi, POTS, etc.

Support EMS/ Web/ Telnet (CLI)/ TR069 Configuration



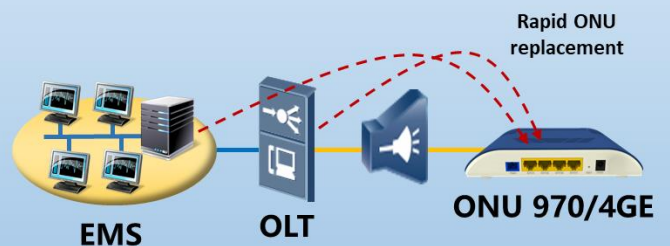
Support ONU Plug and Play

- Device Template for Auto-Configuration



Rapid operation and maintenance

- Auto-upgrade firmware & Auto-Configuration



Model		OLT 9700/4P	OLT 9700/8P	OLT 9700/16P
Chassis	Rack	1U 19-inch standard box		
1G/10G Uplink Port	QTY	6	16	12
	Copper 10/100/1000M auto-negotiation	4	8	
	SFP 1GE	2	6	4
	SFP+ 10GE		2	
GPON Port	QTY	4	8	16
	Physical Interface	SFP Slot		
	Connector Type	Class C+		
	Max splitting ratio	1:128		
Management Ports	1 * 10/100 BASE-T out-band port 1 * Console port			
PON Port Specification (Class C+ module)	Transmission Distance	20KM		
	GPON port speed	Upstream 1.244G, Downstream 2.488G		
	Wavelength	TX 1490nm, RX 1310nm		
	Connector	SC/ UPC		
	Fiber Type	9/125µm SMF		
	TX Power	+3~+7dBm		
	Rx Sensitivity	-30dBm		
	Saturation Optical Power	-12dBm		
Dimension (L*W*H) (mm)		442*220*43.6	442*200*43.6	442*320*43.6
Weight		2.8kg	3.1kg	4.5kg
AC Power Supply		AC: 100~240V, 47/ 63Hz		
DC Power Supply (DC: -48V)		√	√	√
Double Power Module Hot Backup		√	√	√
Power Consumption		35W	45W	85W
Operating Environment	Working Temperature	0~+50°C		
	Storage Temperature	-40~+85°C		
	Relative Humidity	5~90% (non-conditioning)		